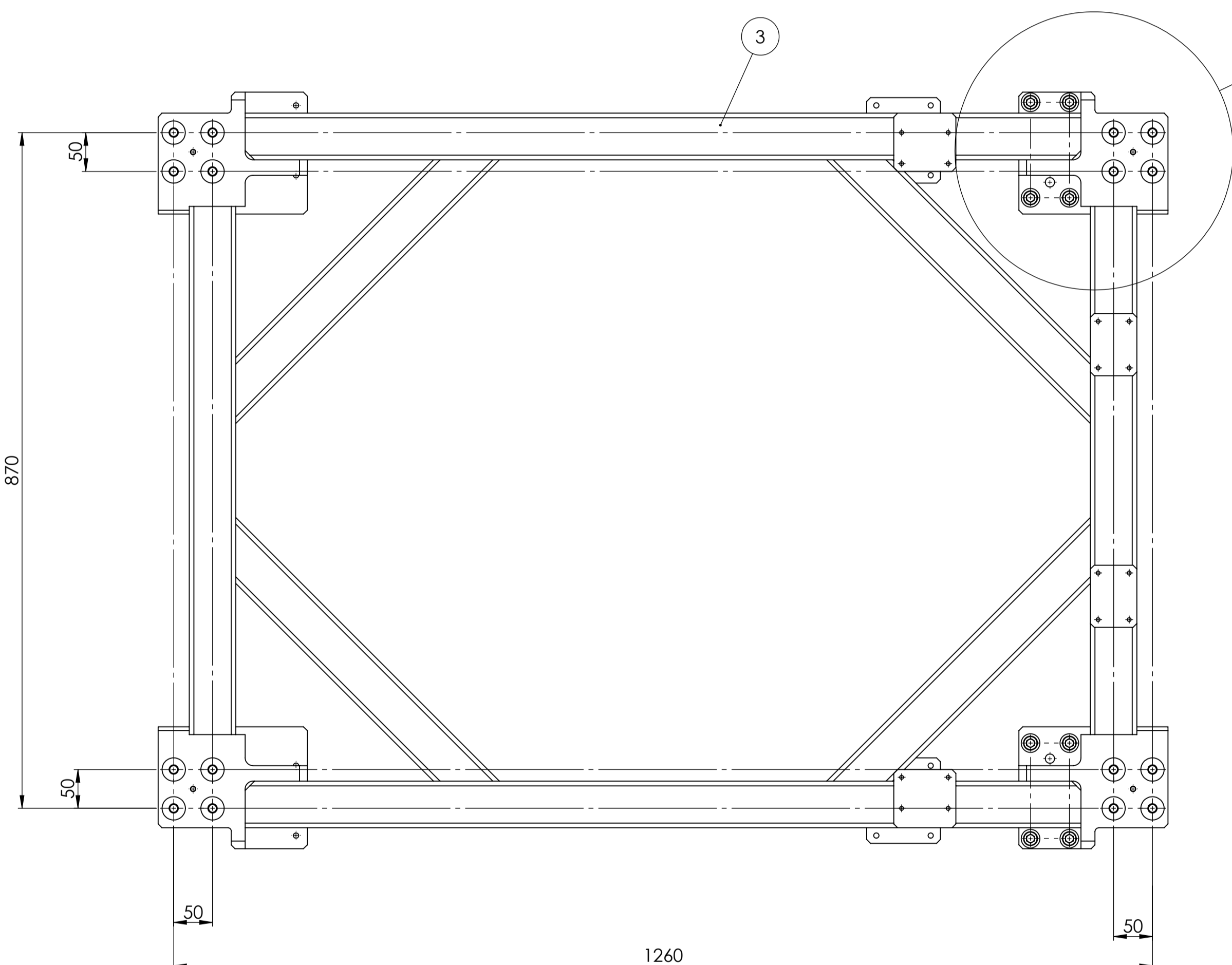
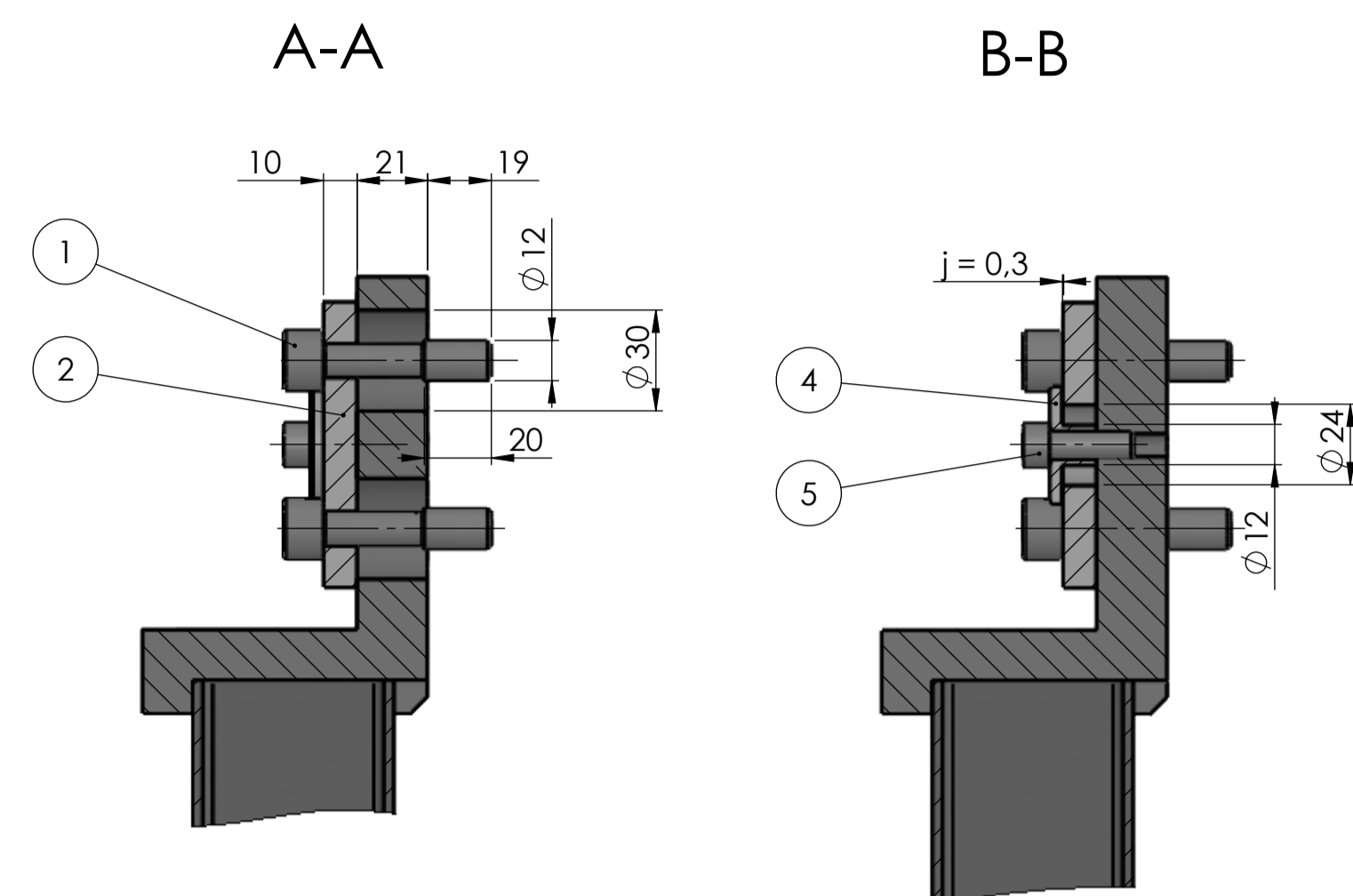
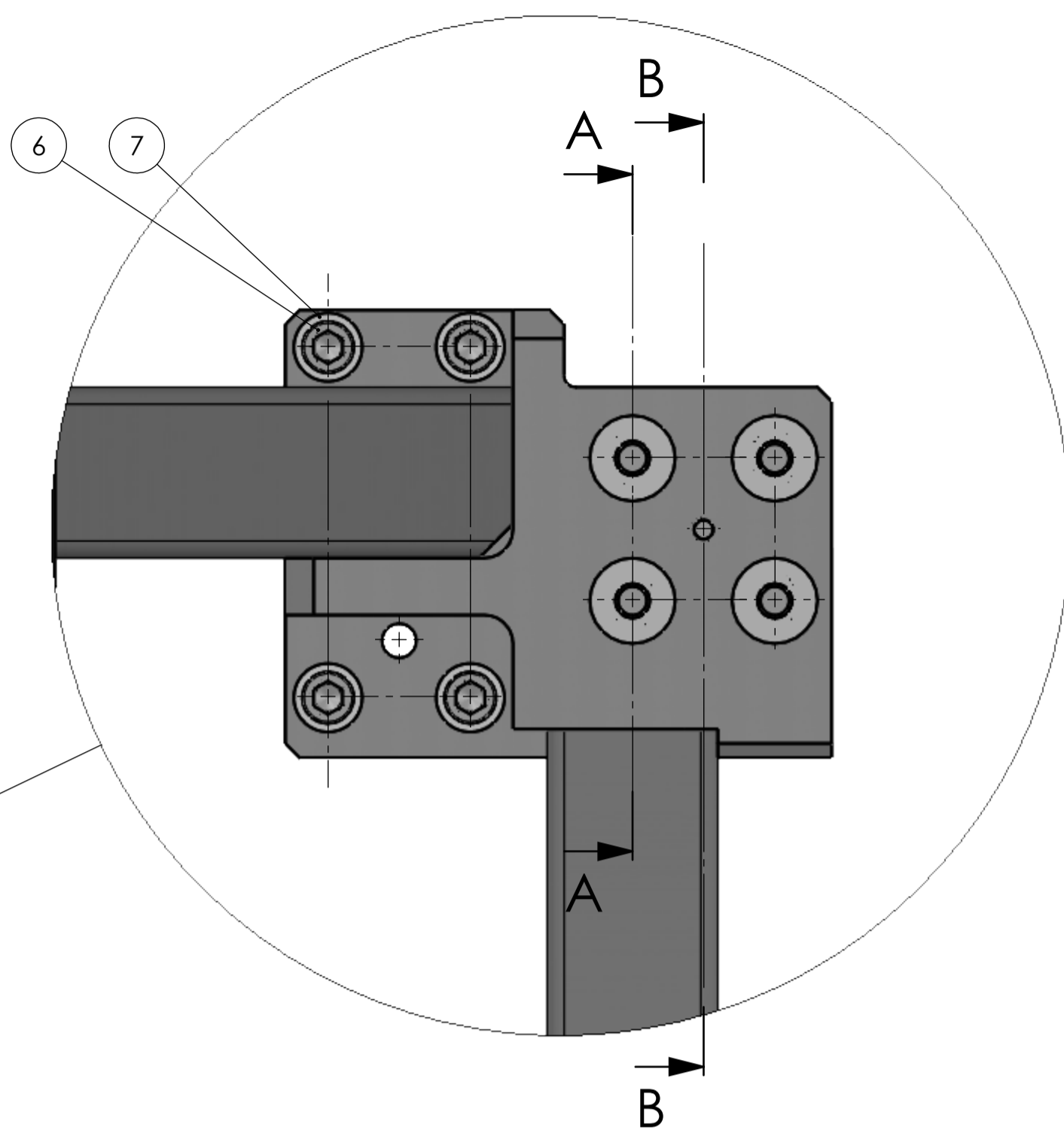
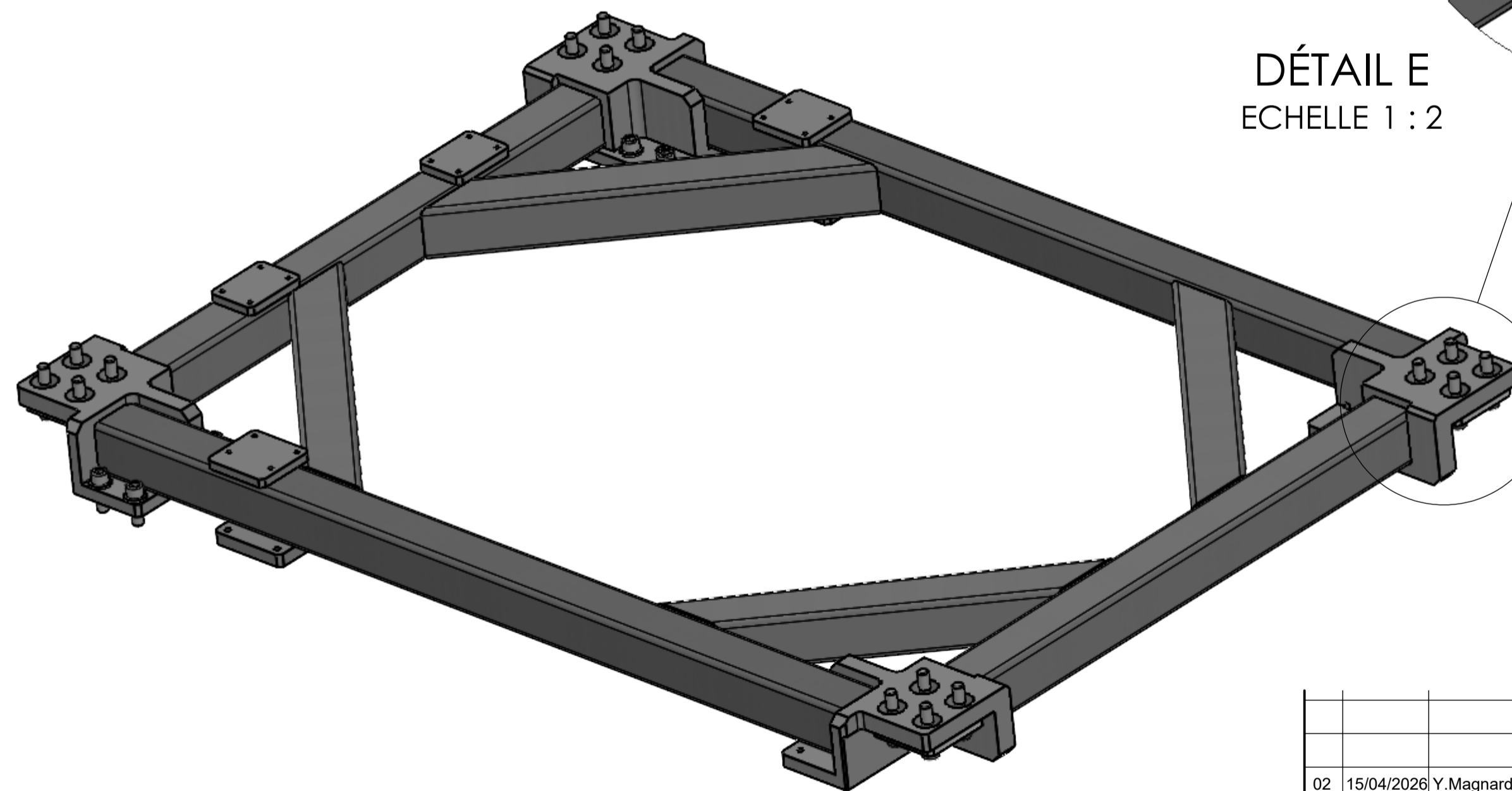
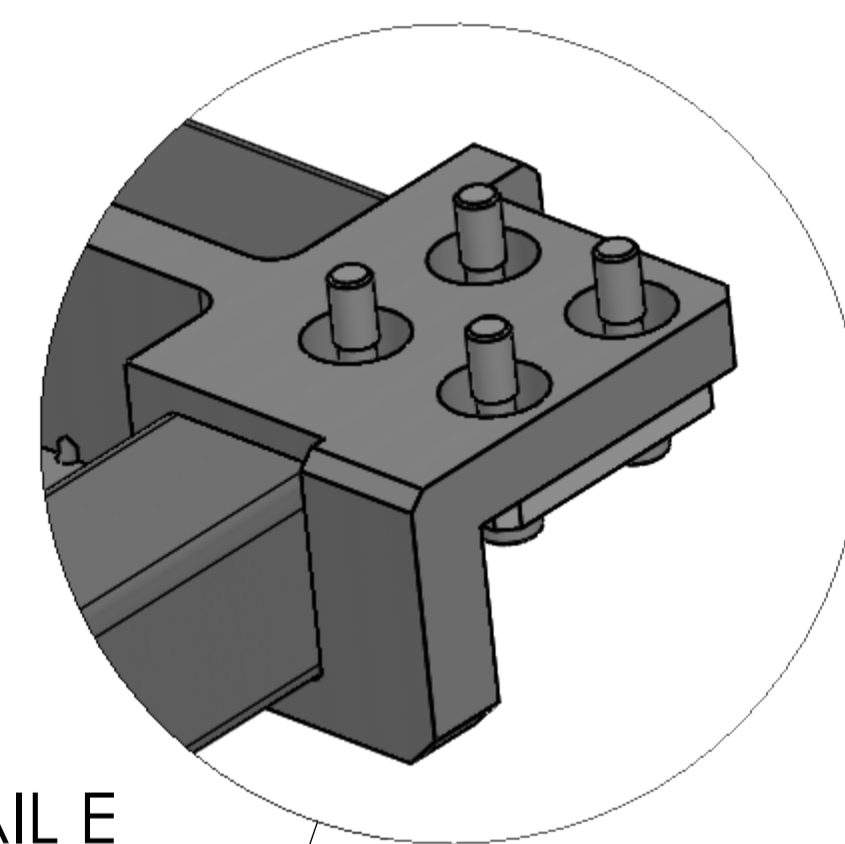


DÉTAIL A
ECHELLE 1 : 2



DÉTAIL E
ECHELLE 1 : 2



NO	NUMERO DE PIECE	DESCRIPTION	MATERIAL	Qua ntité	MASSE (G)	OBSERVATIONS
1	E-MAO-PLA-01-01-01-01	CAPTIVE SCREW	Steel	16	53.55	Cl 10.9
2	E-MAO-PLA-01-01-01-02	COUNTERPLATE	S355 (E36)	4	498.87	
3	E-MAO-PLA-01-01-01-03	FRAME	S355J2 + C45	1	55915.42	
4	E-MAO-PLA-01-01-01-04	RETAINER	EN AW-2017A	4	10.77	
5	ISO 4762 M8 X 25 - 25N			4		CL 10.9
6	ISO 4762 M12 X 35 - 35N			8		CL 10.9
7	WASHER ISO 7089 - 12			8		200HV

02	15/04/2026	Y.Magnard	J.-J. Correia	Materials updated	M.Chebbo
01	05/12/2025	Y.Magnard	J.-J. Correia	FIRST EDITION	M.Chebbo
INDICE Issue	DATE	AUTEUR Author	VERIFIE PAR Checked by	MODIFICATIONS - observations	APPROUVE PAR approved by
MATERIE material				General tolerances : ISO 2768 mk	MASSE weight
TRAITEMENT DE SURFACE surface treatment				Etats de surfaces (surface finish) Ra 3.2 sauf indication	50,7 KG
				Filetages (Threads) : 6H	QUANTITE (quantity)
Institut de Recherche et d'Innovation 414 rue le piscine domaine universitaire 38400 St MARTIN DHERES Tel : +33 4 76 51 47 88		CS 40700 F-38058 GRENOBLE CEDEX 9 adresse géographique : Bât OSUG A	FORMAT A1 SIZE ECHELLE 1:5 SCALE	TITRE-Title LGS WFS INTERFACE FRAME (IF) ASSEMBLY	DWG N° E-MAO-PLA-01-01-01-00 IND- Issue FOLIO- Sheet 02 / 1/1